

FS2334 DDR2 800 MT/s DIMM Analysis Probe

Quick Start Instructions

1. Check Logic Analyzer – Only 16753/4/5/6 or 16950 cards can be used because of their superior setup/hold performance and signal loading characteristics. The 169x requires Agilent system software A.03.20.00 or higher.
2. There are several different logic analyzer probing configurations possible depending on the speed of the DDR2 bus being probed and the number of logic analyzer frames and cards available to the . The following table provides some detail on the choices.

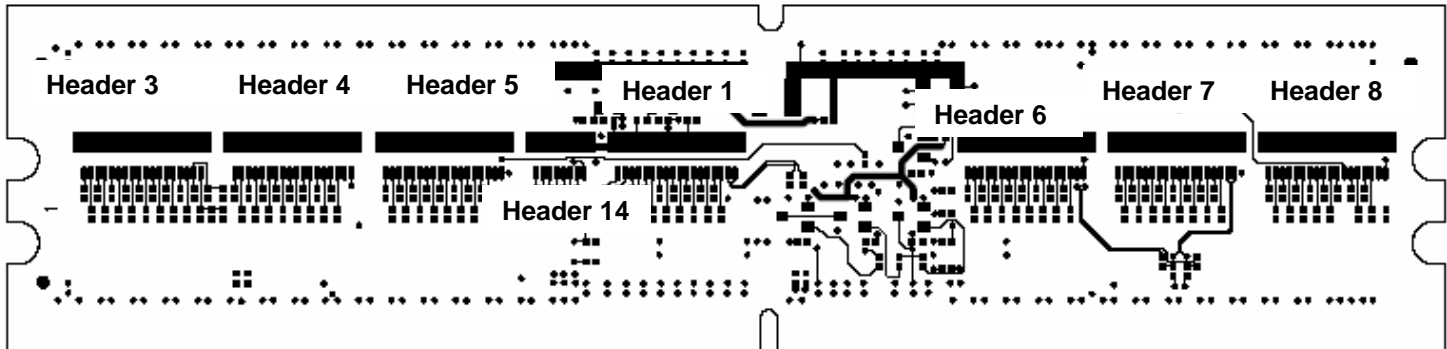
169xx Analyzer Card	Timing Analysis	State Analysis
667MT/s or slower 16753/4/5/6, 16950	FS234_2 3 cards configured as one module, one timing machine	FS234_5 4 cards configured as one logic analyzer state machine. Uses FS1117
800MT/s 16753/4/5/6, 16950	FS234_2 3 cards configured as one module, one timing machine	FS234_1 Read and Write analysis requires 7 cards across 2 frames configured as 2 logic analyzer state machines. Uses FS1136 FS234_3 4 card configuration provides Write state analysis only Uses FS1136 FS234_4 4 card configuration provides Read state analysis only Uses FS1136 FS234_32_Lower(Upper) 4 card configuration provides Read and Write state analysis for only 32 bits of Data, either Lower or Upper Uses FS1136

3. Configure Logic Analyzer cards– **Note: These are all for unbuffered DIMM probing**

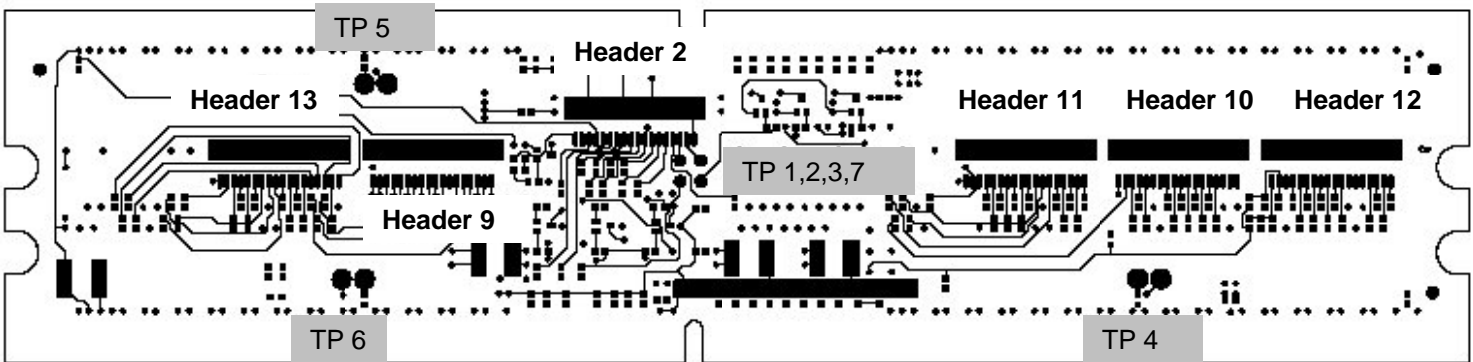
FS234_1 2 machine, 7 Card 800MT/s Read and Write configuration file	Write – Command machine 4 cards in slots A – D (B = Master) Read machine 3 cards in slots A – C (B = master)
FS234_32_Lower(Upper) 4 card 32 bit 800MT/s Data State analysis configuration	4 cards in slots A – D (B = Master)
FS234_2 Timing analysis 3 card configuration	3 cards in slots A – C (B = Master)
FS234_3 800MT/s Writes only 4 card configuration	4 cards in slots A – D (B = Master)
FS234_3 800MT/s Reads only 4 card configuration	4 cards in slots A – D (B = Master)
FS234_3 667MT/s Reads and Writes 4 card configuration	4 cards in slots A – D (B = Master)

4. Once the logic analyzer cards are ready load the configuration files appropriate for the set-up. Not every header will connect to a logic analyzer pod. Use the General Purpose Probe feature for detailed instructions.

FS2334 Frontside layout



FS2334 Backside layout



5. Refer to the User Manual for signal threshold and sample position setting procedures. Both are critical for accurate state capture. If signal threshold and sampling position adjustments are needed be sure to save them in either the current or a new configuration file.

For Technical Support call 603-471-2734

For Sales information call 719-278-3540

Please visit our web site at www.futureplus.com

FS2334 QS rev. 1.1