

# VME/VXI Analysis Probe and Interposer

For use with Agilent Logic Analyzers

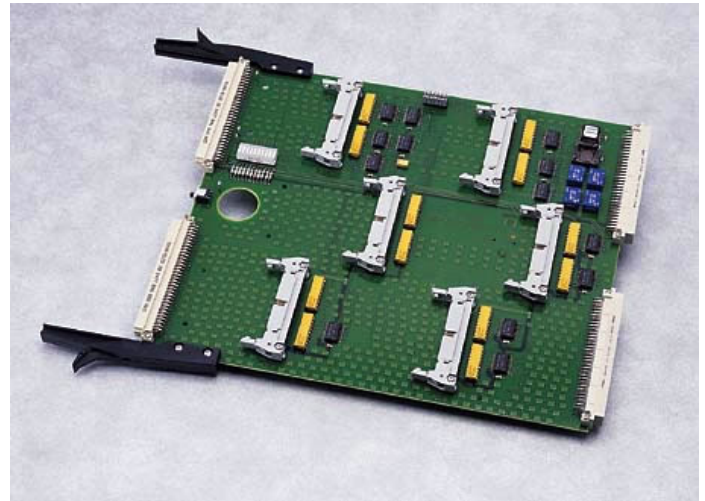
FuturePlus® Systems

Power Tools for Bus Analysis

## Straightforward, Reliable VME/VXI Analysis

The FS3100 VME/VXI Analysis Probe provides an electrical and mechanical interface to Agilent logic analyzers for passive VME or VXI bus state analysis in B-size or C-size systems. In State Analysis mode, the bus protocol decode software executes in the Agilent logic analyzer and decodes the key VME/VXIbus signals.

A readable display is presented that lists the transaction type, address, data and address modifiers. The software also supports user-defined symbols that can be easily added to the state listing display. To assist with triggering, pre-defined resource terms have been included. Pod clocking logic decodes the VME64/VXI commands and delivers the Master/Slave clocks to the logic analyzer.



FS3100 VME/VXI Analysis Probe and Interposer

## Key Features

- Reliable and accurate 32 or 64 bit VME/VXIbus analysis
- Complete State Analysis to 333 MHz
- Timing Analysis to 500 MHz
- Logic Analyzer Configuration Software gets you up and running fast
- Entire 64-bit address and databus de-multiplexed for ease of triggering and analysis
- No need for flying leads or termination adapters
- VME and VXIbus transaction protocol decode software executes in your Agilent logic analyzer
- Conforms to VME Specification Rev. 1.11 and VXIbus Consortium, Inc. Specification Rev. 1.3
- Decodes both VME and VXI Configuration Registers
- Extender Card function supports bus analysis AND extender card capability
- Status LED's indicate Power (+5V, -12V, +12V, +5 STDNBY), ACFail, SYSFAIL, and SYSRESET

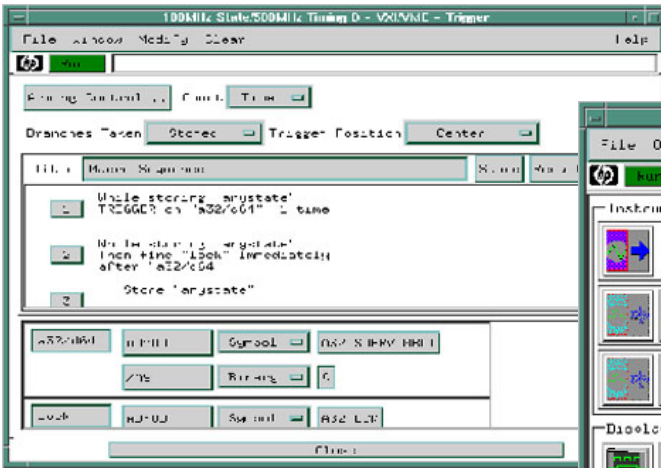
## Helping you Design Tomorrow's Computers, Today

FuturePlus Systems is the technology leader in protocol analysis tools for the computer design industry. Our analysis probes and software help you monitor and verify complex activities on your advanced technology computer bus design. FuturePlus systems offerings include bus-analysis solutions for most popular computer buses. Visit [www.futureplus.com](http://www.futureplus.com) for more information.

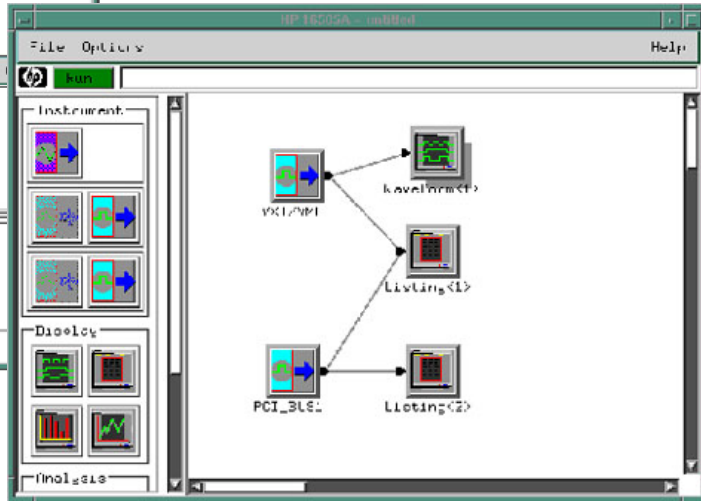




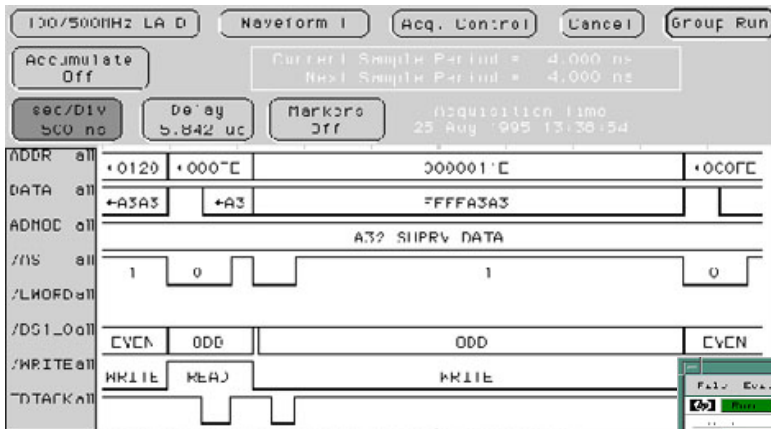
# Powerful Software



The VME Analysis Probe software contains pre-defined trigger terms that help track down those hard-to-find bugs.



Agilent's Logic Analysis System allows you to construct your own custom measurements with other FuturePlus Analysis Probes such as PCI, PCI Mezzanine Card (PMC), or a memory bus to assist you in making multiple-bus measurements.



Matched signal length and low capacitive loading of the VME/VXI signals make the FS3100 ideal for accurate and easy timing analysis.

State	Function	Address	Data	Time
2	00000011	00000000	00000000	2.100 us
3	00000111	00000000	00000000	400.000 us
4	00000011	00000000	00000000	3.250 us
5	00000011	00000000	00000000	410.000 us
6	00000011	00000000	00000000	3.750 us
7	00000011	00000000	00000000	400.000 us
8	00000011	00000000	00000000	3.750 us
9	00000011	00000000	00000000	480.000 us
10	00000011	00000000	00000000	2.100 us
11	00000111	00000000	00000000	400.000 us
12	00000011	00000000	00000000	3.250 us
13	00000111	00000000	00000000	410.000 us
14	00000011	00000000	00000000	3.750 us
15	00000011	00000000	00000000	400.000 us
16	00000011	00000000	00000000	3.750 us
17	00000011	00000000	00000000	480.000 us
18	00000011	00000000	00000000	2.100 us
19	00000111	00000000	00000000	400.000 us
20	00000011	00000000	00000000	3.250 us
21	00000011	00000000	00000000	410.000 us
22	00000011	00000000	00000000	3.750 us
23	00000011	00000000	00000000	400.000 us

Protocol-sensitive clocking allows the VME, VME64, or VXI protocol decoder to display all bus transactions in an easy to read format.

## Ordering Information

**FS3100** - 32/64-bit VME / VXI Analysis Probe and Extender Card

**Software included with the FS3100:**

Configuration files for the Agilent logic analyzer

Protocol Decoder software, runs on the Agilent logic analyzer

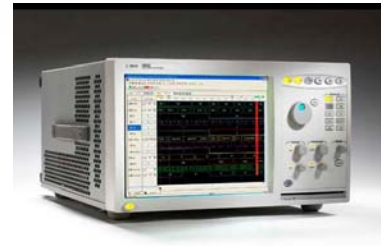
## Logic Analyzer Requirements

The FS3100 supports all Agilent 1670, 16700, 1680, 1690, 16800 and 16900-series Logic Analyzers that have 40 pin modules. Pod requirements are in the table below:

Bus Configuration	Pods Required for Protocol Analysis	Pods Required for Protocol and Timing Analysis
32 bit address, 32 bit data	5	6
32 bit address, 64 bit data	7	8
64 bit address, 64 bit data	9	10

1. For timing analysis of BR0-BR3, BBSY, BCLR, IRQ1-IRQ6, BERR/IRQ7, IACKIN, IACKOUT and DTACK, an additional pod is required.
2. Double-probing Y connectors are provided for configurations that require more than 6 pods.
3. The FS3100 does not require Termination Adapters.

Please note: for the most up-to-date information about Agilent logic analyzer compatibility, please check the FuturePlus Systems website at: [http://www.futureplus.com/products/fs3100/fs3100\\_sysreq9.shtml](http://www.futureplus.com/products/fs3100/fs3100_sysreq9.shtml)



**We offer excellent technical support and quick delivery.**

More information and application notes are on the FuturePlus Systems website at: <http://www.futureplus.com/products/fs3100>

**FuturePlus Systems Corporation**

6455 N. Union Blvd. Suite 202  
Colorado Springs, CO 80918-5844  
Tel: 719 278 3540  
Fax: 603 471 2738  
Website: [www.futureplus.com](http://www.futureplus.com)

**Represented By:**