

DDR3 1333 Memory Bus Interposer For Use With Tektronix Logic Analyzers

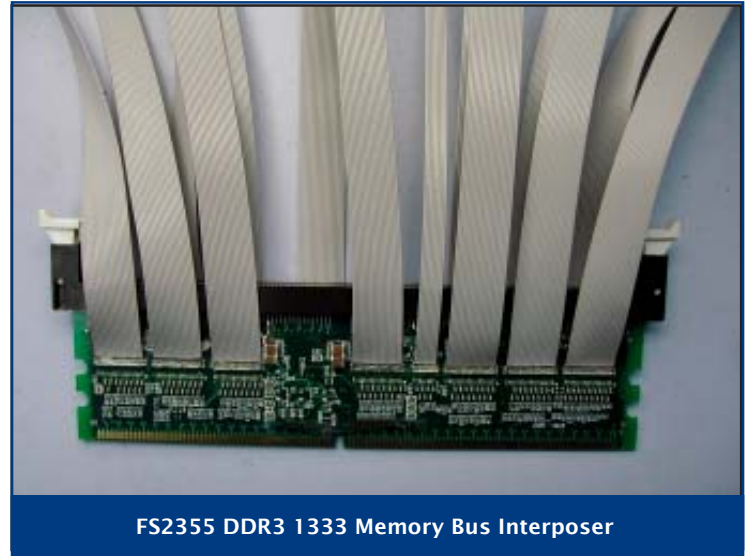
FuturePlus® Systems

Power Tools for Bus Analysis



DDR3 1333 MT/s Analysis Probe

- Quick, easy connection between the DIMM connector and Tektronix Logic Analyzers
- Compatible with all 240-pin DDR3 SDRAM DIMMs
- Up to 1333 MT/s protocol decode
- 50 GHz MagniVu™ Timing Acquisition
- Non-intrusive interposer design



FS2355 DDR3 1333 Memory Bus Interposer

Key Features

- Quick and easy connection between the DDR3 DIMM connector and Tektronix logic analyzers
- Up to 1333 MT/s protocol decode
- Supports both registered and non-registered DIMMs
- Interposer design allows probing a fully-loaded memory bus
- Simultaneous capture of read and write transactions

Powerful, Reliable 1333 MT/s Protocol Decode

FS2355 is a 1333 MT/s Double Data Rate (DDR3) SDRAM bus interposer. It provides complete protocol decode of memory transactions using a Tektronix logic analyzer as the analysis execution engine. This combination provides powerful triggering, debug and compliance verification measurements. Data is decoded and displayed at any level of detail from the protocol to binary.



Helping You Design with Tomorrow's Computer Buses, Today

FuturePlus Systems is the technology leader in protocol analysis tools for the computer design industry. Our preprocessors and software help you monitor and verify complex activities on your advanced-technology computer bus design. FuturePlus Systems offerings include bus-analysis solutions for PCI Express®, Serial RapidIO® PCI-X, DDR Memory, USB2.0, and most other popular computer buses.

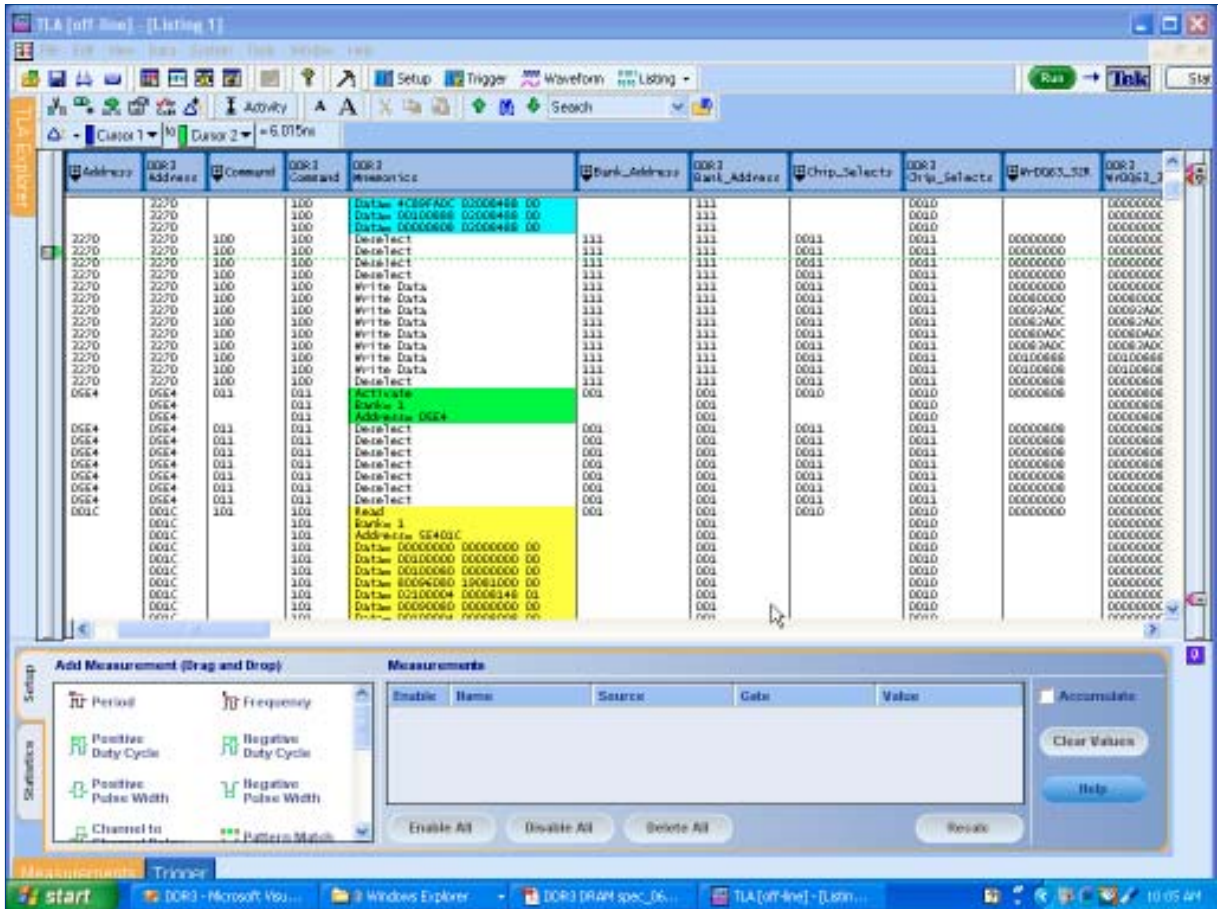
Accurate State and Timing Analysis

The FS2355 DDR3 1333 DIMM memory bus interposer brings bus signals to your Tektronix logic analyzer via controlled impedance cables for an easy protocol-and-timing analysis connection while maintaining signal fidelity.

Configuration Software for Quick, Easy Setup

The FS2355 DDR3 protocol preprocessor includes automatic setup software for all supported Tektronix logic analyzer configurations.

Protocol Analysis



Protocol Decode Mode

The FS2355 protocol-decode software translates acquired signals into easily understood bus transactions, at the full bus speed. The Tektronix logic analyzer provides extensive triggering and store qualification features.

Depending on the logic analyzer's resources, the FS2355 probe can be configured to perform State analysis of Reads or Writes, or both Reads and Writes, at 1333 MT/s.

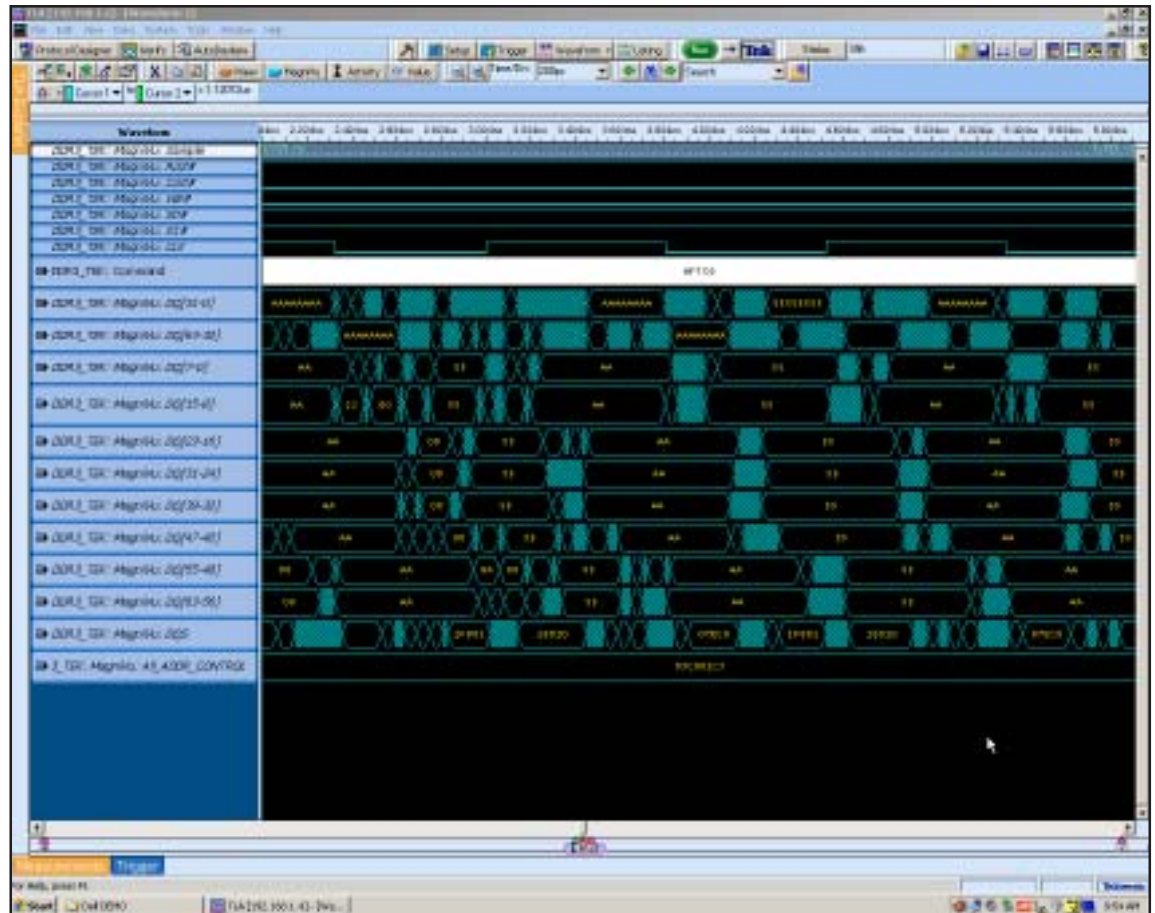
The DDR protocol-decode software executes in the logic analyzer and takes user input on system attributes such as Burst length, CAS and Additive Latency, as well as Chip Selects to decode the key DDR bus signals and present a display that lists the transaction type, address, data and command conditions. The software also supports user-defined symbols that can be easily added to the state listing display. User-selectable post-processing filters allow the acquired data to display different types of transactions in different colors.

Timing Analysis

Timing Analysis

The FS2355 lets you perform timing analysis measurements on a DDR3 DIMM bus at speeds up to 1333 MT/s.

The MagniVu™ Timing signals provided by the Tektronix logic analyzer allow accurate waveform analysis of all signals on the DDR3 DIMM bus.

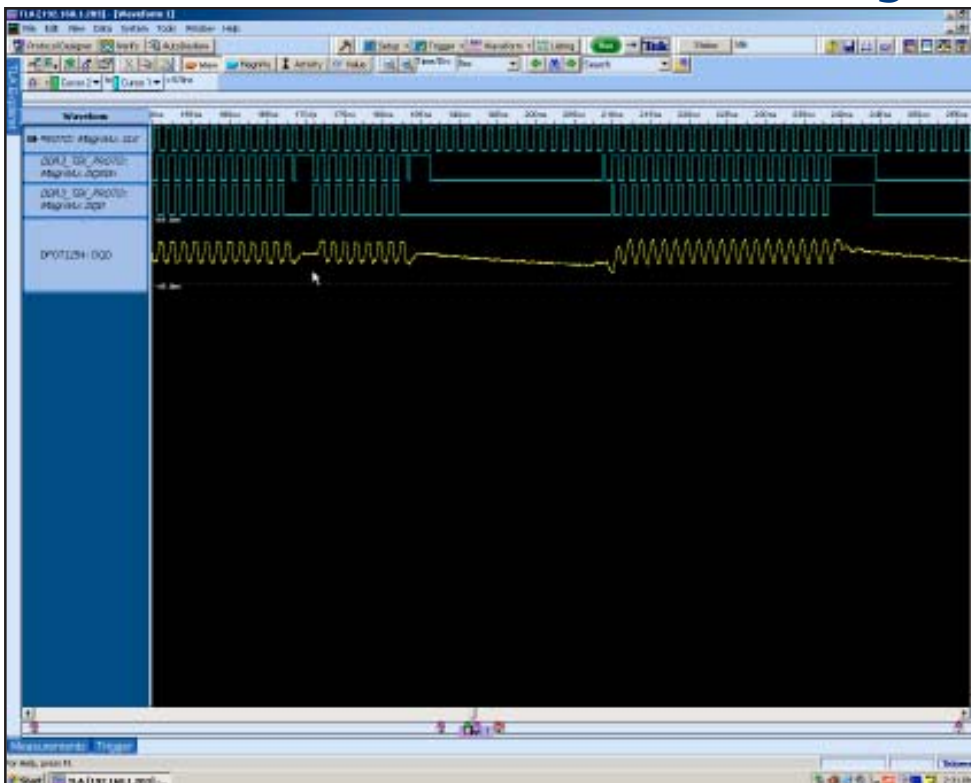


Timing Analysis shows the timing relationships between the various bus signals as they are acquired.

Signal Integrity Analysis

Measure Signal Integrity

Simultaneously acquire both digital and analog data from your logic analyzer and oscilloscope, and display them together on the logic analyzer display. iCapture gives you access to Tektronix' industry-leading real-time oscilloscopes.

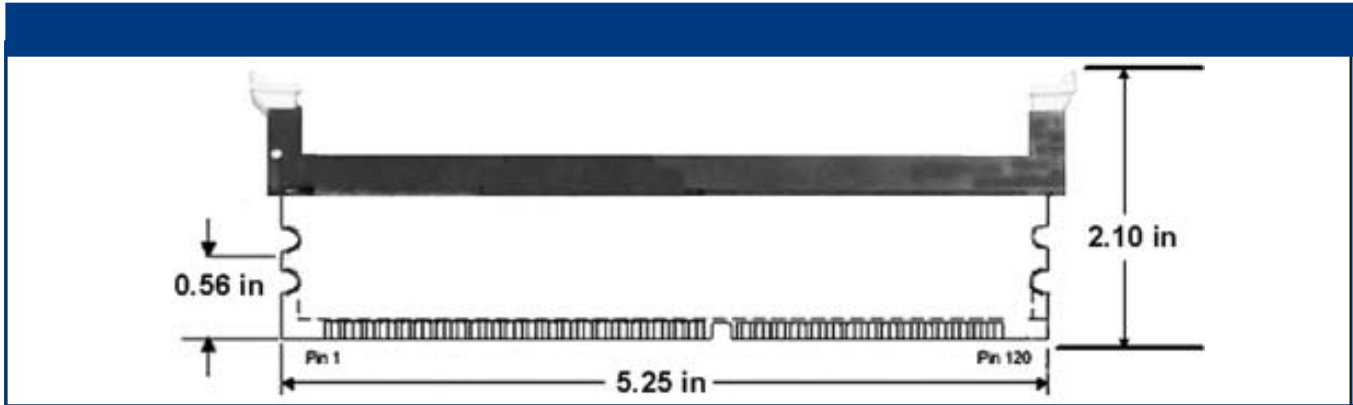


iCapture technology permits simultaneous viewing of analog and digital data

Supported Tektronix Logic Analyzers

Timing Analysis: Tektronix TLA 7000-series frame with two (2) TLA7BB4 modules

Protocol Analysis: Tektronix TLA 7000-series frame with two (2) TLA7BB4 modules



Ordering Information

FS2355	1333MT/s DDR3 Interposer
FS2353	DDR3 Latency-balancing Load Module
FS1055	Full-channel Probe Cable (1 Required)
FS1056	Half-channel Probe Cable (7 Required)

We offer excellent technical support and quick delivery.

Ask about The Bus Analyzer, our free customer support newsletter.
Visit our web site at www.futureplus.com.

FuturePlus Systems Corporation

P.O. Box 88155
Colorado Springs, CO 80908-8155 USA

Tel: (719) 278-3540
Fax: (719) 278-9586

Email via web at www.futureplus.com

Represented By:

