

# DisplayPort Cable Interposer

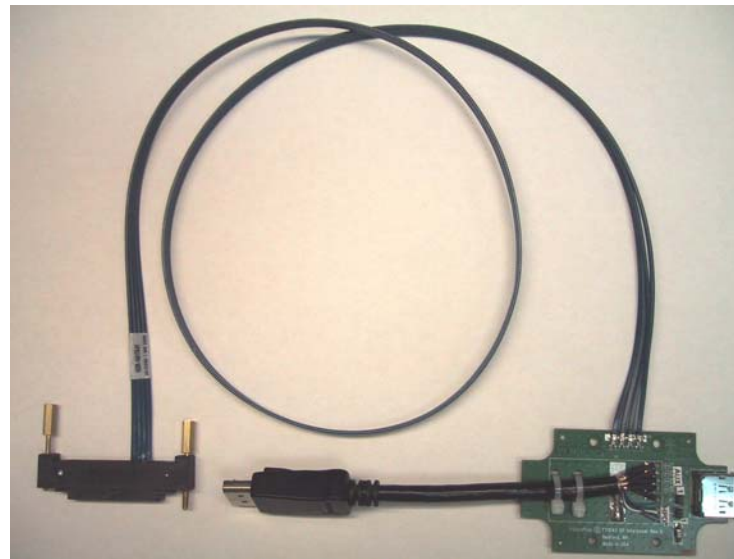
For use with FuturePlus DisplayPort Preprocessor

Straightforward, Reliable DisplayPort Analysis

FuturePlus® Systems

Power Tools for Bus Analysis

## FS1040 DisplayPort Cable Interposer



### General Description

The FS1040 is a DisplayPort cable interposer that probes the DisplayPort bus between the motherboard and the monitor. One end of the interposer has a short cable with a DisplayPort connector that connects to the motherboard. The other end of the FS1040 has a DisplayPort connector that connects to the display device (monitor).

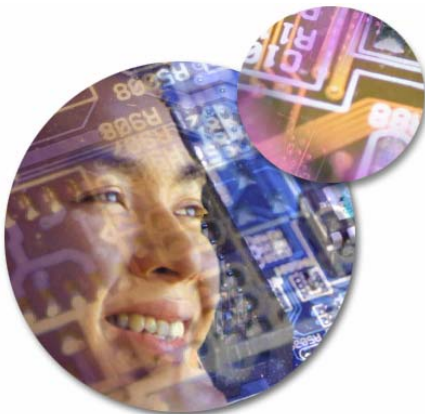
The FS1040 probes the high speed Main Link, Auxiliary Channel and Hot Plug Detect (HPD). The Aux Channel and HPD connect via 3 pin header stake pins. These connect to the two cables from the FS443x DisplayPort Preprocessor. The high speed Main Link is tapped and connected to a soldered-on cable. The other end of the cable connects to the FS443x instrument end header.

### Key Features

- Most flexible probing method for DisplayPort
- Provides connections to the Main Link, the Auxiliary Channel and Hot Plug Detect (HCD) signals
- No additional cables needed when using the FS1040 to probe the DisplayPort bus.

### Specifications

- Provides a complete “pass-thru” of all 20 signals specified for the DP cable in section 4.2 of the v1.1a specification.
- No reordering of the lane bits
- The interposer cable has been qualified at 2.7 GBps.



### Helping you Design Tomorrow's Computers, Today

FuturePlus Systems is the technology leader in protocol analysis tools for the computer design industry. Our analysis probes and software help you monitor and verify complex activities on your advanced technology computer bus design. FuturePlus systems offerings include bus-analysis solutions for most popular computer buses. Visit [www.futureplus.com](http://www.futureplus.com) for more information.

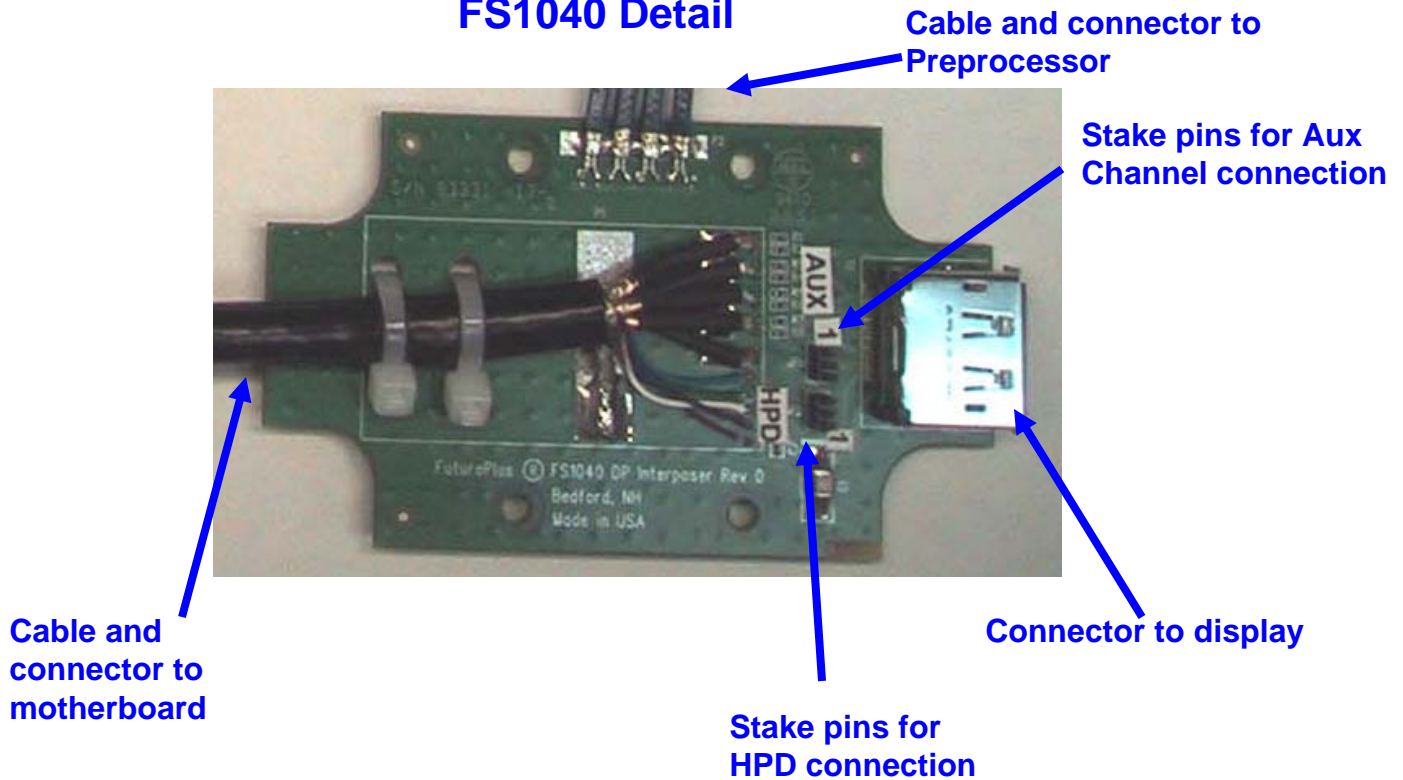
# Ordering Information

## FS1040 DisplayPort Cable Interposer

### Preprocessor Requirements

The FS1040 connects to the FS4430 DisplayPort Analysis Probe, supported by Agilent logic analyzers, and the FS4435 DisplayPort Preprocessor, supported by Tektronix logic analyzers.

### FS1040 Detail



We offer excellent technical support and quick delivery.

### FuturePlus Systems Corporation

P.O. Box 88155  
Colorado Springs, CO 80918-8155  
Tel: 719 278 3540  
Fax: 719 278-9586  
Website: [www.futureplus.com](http://www.futureplus.com)

### Represented By: